

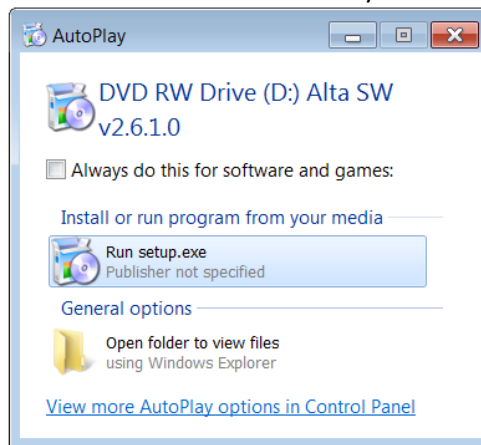
Using Alta ENET Products on Microsoft Windows Systems (Rich Wade, 6 SEP 13)

This document applies to all Alta ENET products (ENET-1553, ENET2-1553, ENET-A429, etc.) and provides step-by-step instructions to get these products running on Microsoft Windows systems. In this discussion we will be using the **ENET-1553** device on **Windows 7**.

The ENET device is shipped with a software CD, an Ethernet cable, a J1 cable assembly (and optionally a J2 cable assembly). These are the steps to get the ENET running on Windows:

1. Install the Alta Software.
2. Connect the J1 cable assembly to the J1 connector on the ENET device.
3. Connect the J1 cable assembly USB plug to the PC for power.
4. Connect the J1 cable assembly RJ-45 connector to an Ethernet cable, then connect the Ethernet cable to your PC.
5. Configure the PC to use a static IP address on the same subnet as the ENET device.
6. Run the AltaView bus analyzer software and use this to communicate with the ENET device.

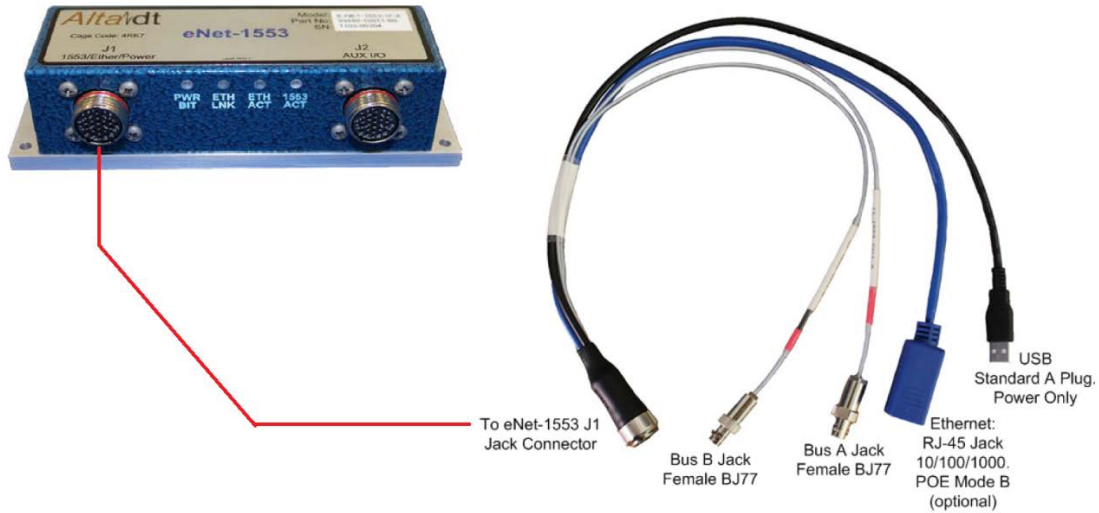
First install the Alta Software on your system. When you insert the CD you have the option to auto-run setup.exe – If you are using **32-bit Windows** then this is what you want to run.



If you are running **64-bit Windows** then you want to select “Open folder to view files”, go to the **Win64** folder on the CD and run the setup.exe found there.

Go through the installation process and reboot the system.

Connect the J1 cable assembly to the J1 connector on the ENET device.

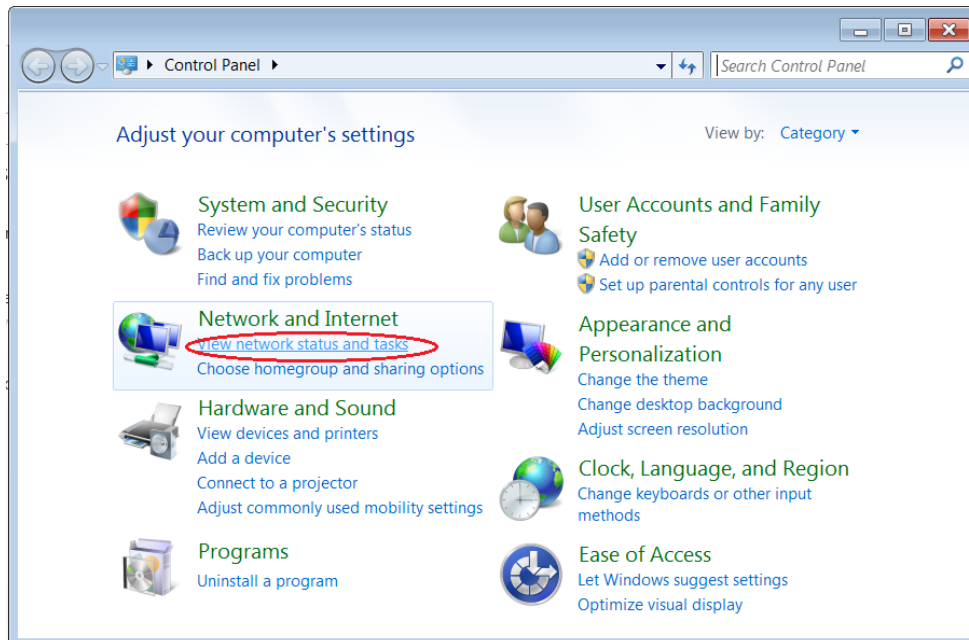


Connect the J1 USB plug to a USB port on your computer. This is only used to power the device. At this point the PWR/BIT LED should be GREEN, the ETH LNK LED should be RED, the ETH ACT LED should be OFF, and the 1553 ACT LED should be OFF.

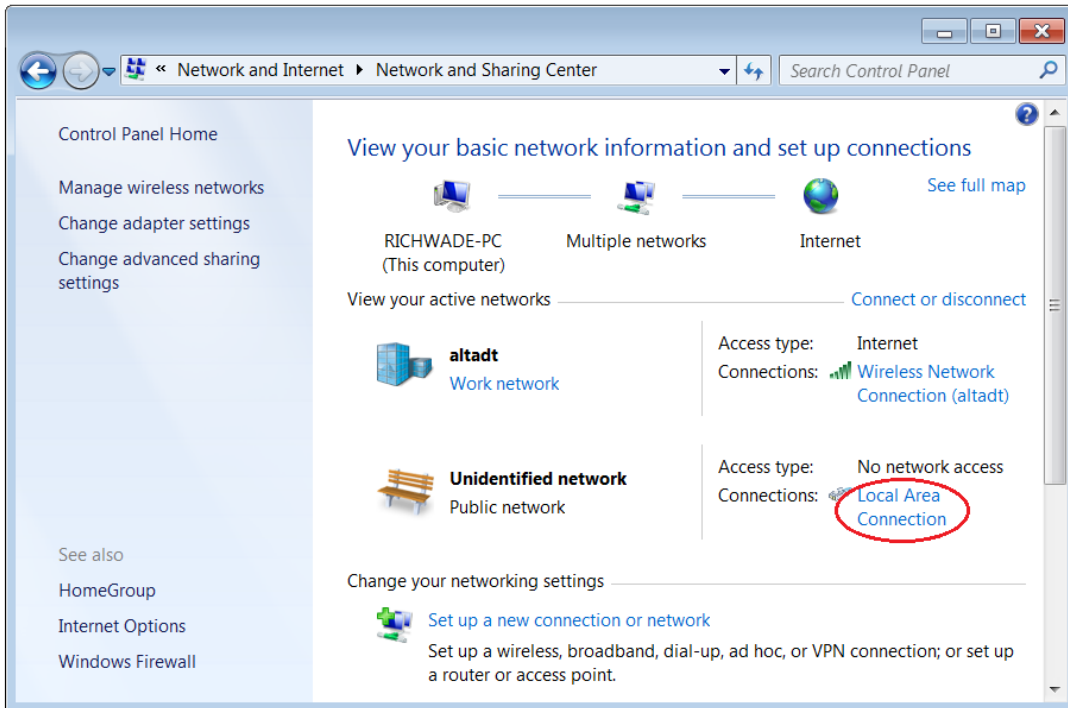
Connect an Ethernet cable to the J1 cable assembly RJ-45 jack, then connect the other end of the Ethernet cable to an Ethernet connector on your system. This is a direct connection between the ENET device and the computer (no switches or anything else). This is the most simple connection – start with this to get the ENET working and if desired add switches later. At this point the ETH LNK LED should turn GREEN and the ETH ACT LED may blink GREEN for a few seconds.

Configure the PC to use a static IP address. The factory default IP address on the ENET device is 192.168.0.128. The PC needs to be on the same subnet in order to talk to the ENET device. We will use 192.168.0.1.

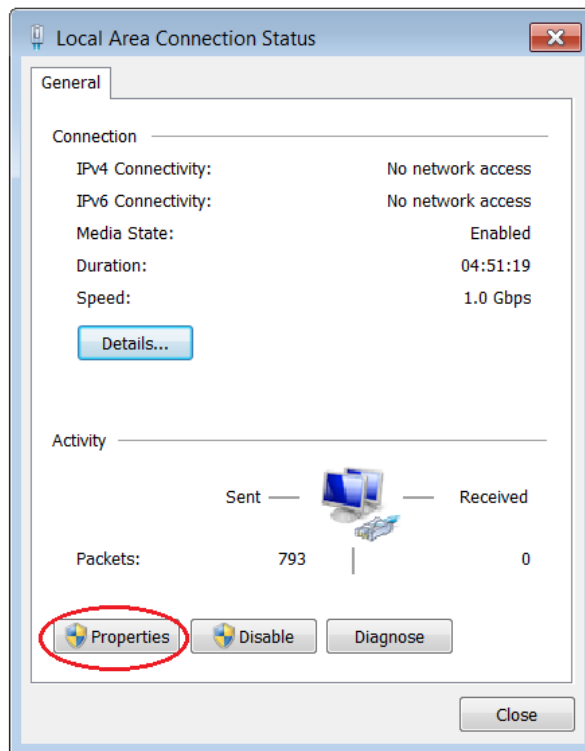
Open the Windows Control Panel and select “View network status and tasks”.



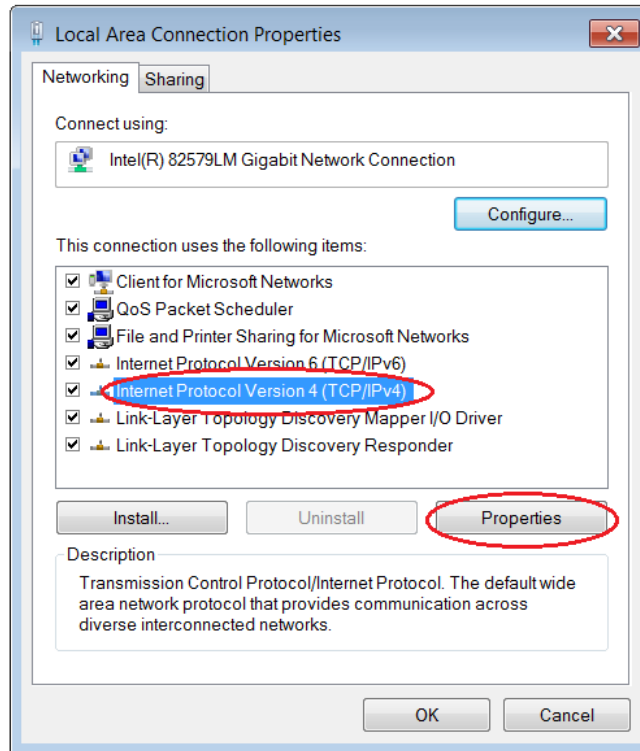
This opens the Network and Sharing Center:



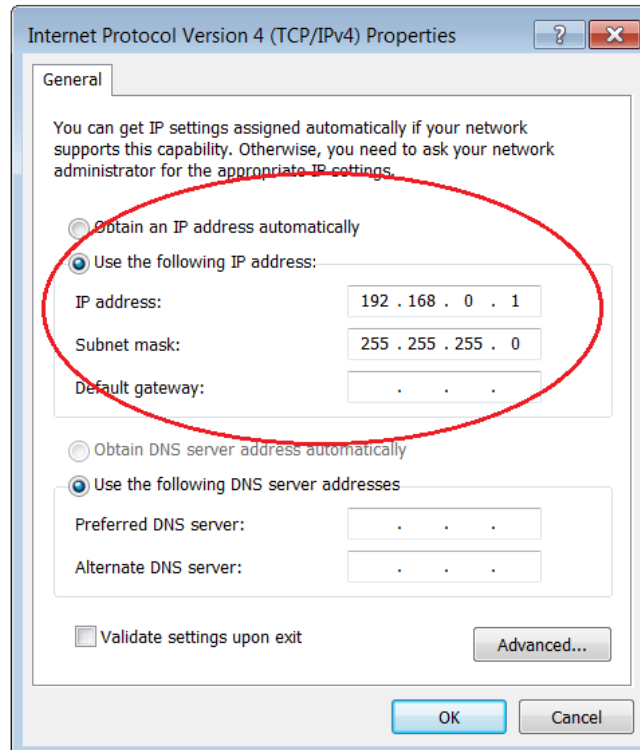
Select the appropriate network connection. This displays the connection status.



Select "Properties".



Select "Internet Protocol Version 4 (TCP/IPv4)" then click the "Properties" button.

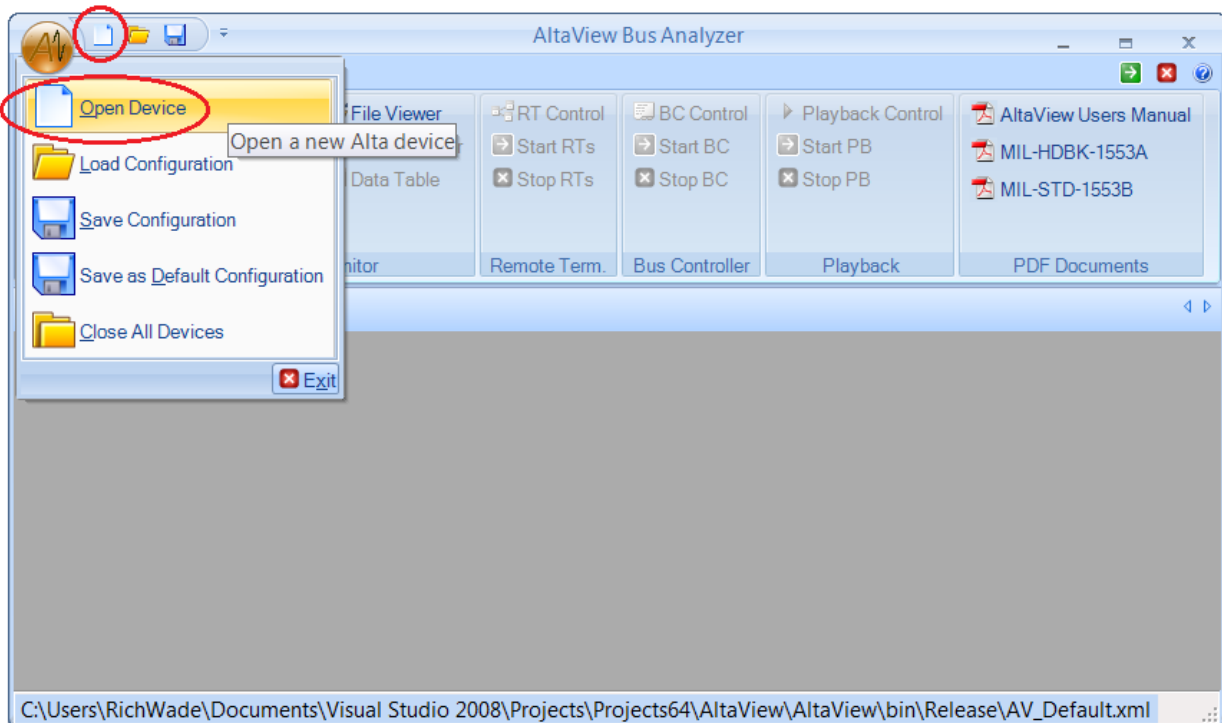


Select “Use the following IP Address”, enter the IP address 192.168.0.1, enter a Subnet mask of 255.255.255.0. Click OK on this dialog and the others until back at the top level.

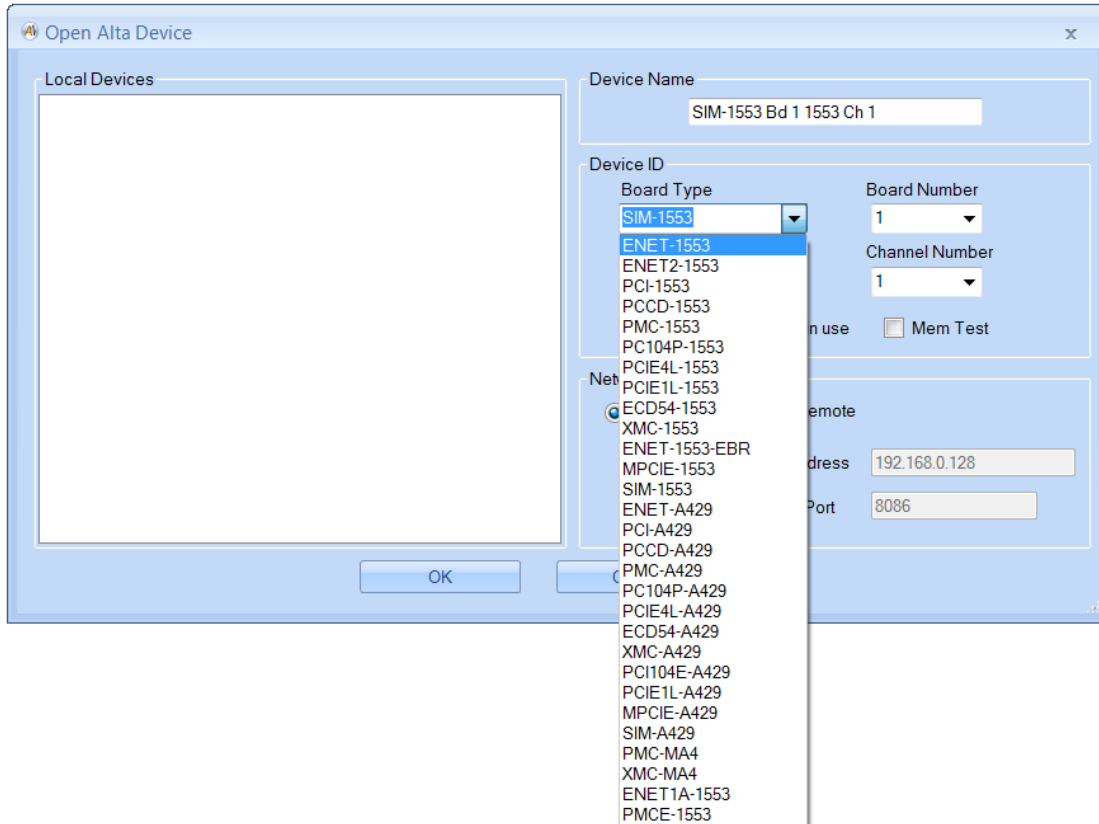
You can now close the Windows Control Panel. **Now the PC is configured to use a static IP address of 192.168.0.1.**

We will use the AltaView bus analyzer software to open the ENET device. Refer to the **AltaView Software Users Manual** for details on the AltaView software. Run the AltaView software.

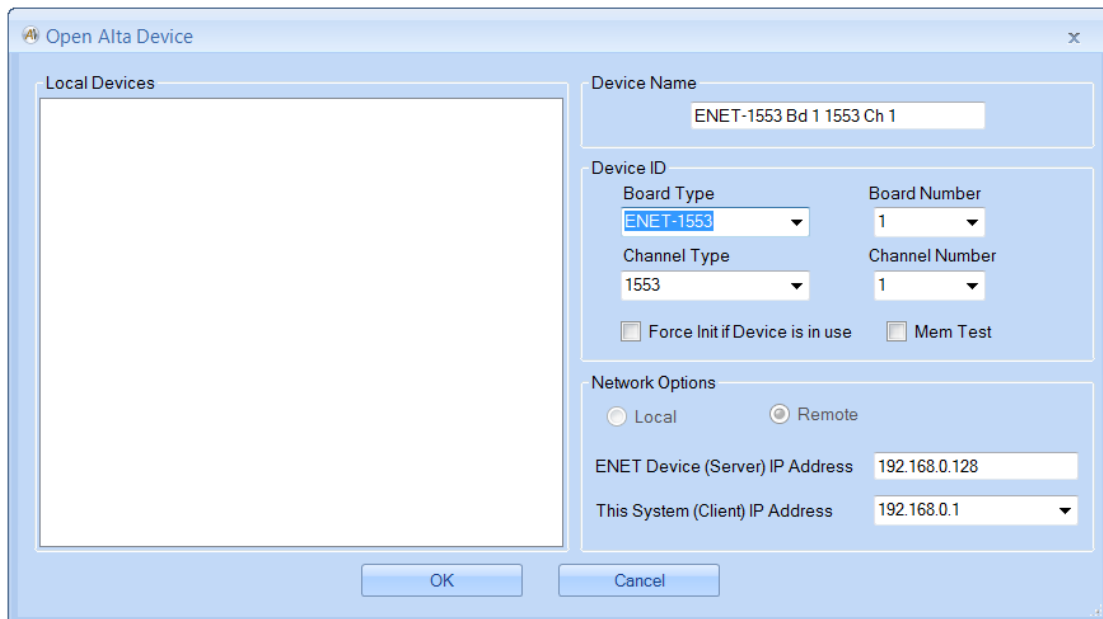
Run the AltaView software. You will see the “AltaView Intro” dialog that gives you the option to run simulated devices for 1553 or A429. Do not check either of these boxes, click OK. Now you are at the AltaView main form.



From the Logobutton or the Quick Access Toolbar, **select “Open Device”**.



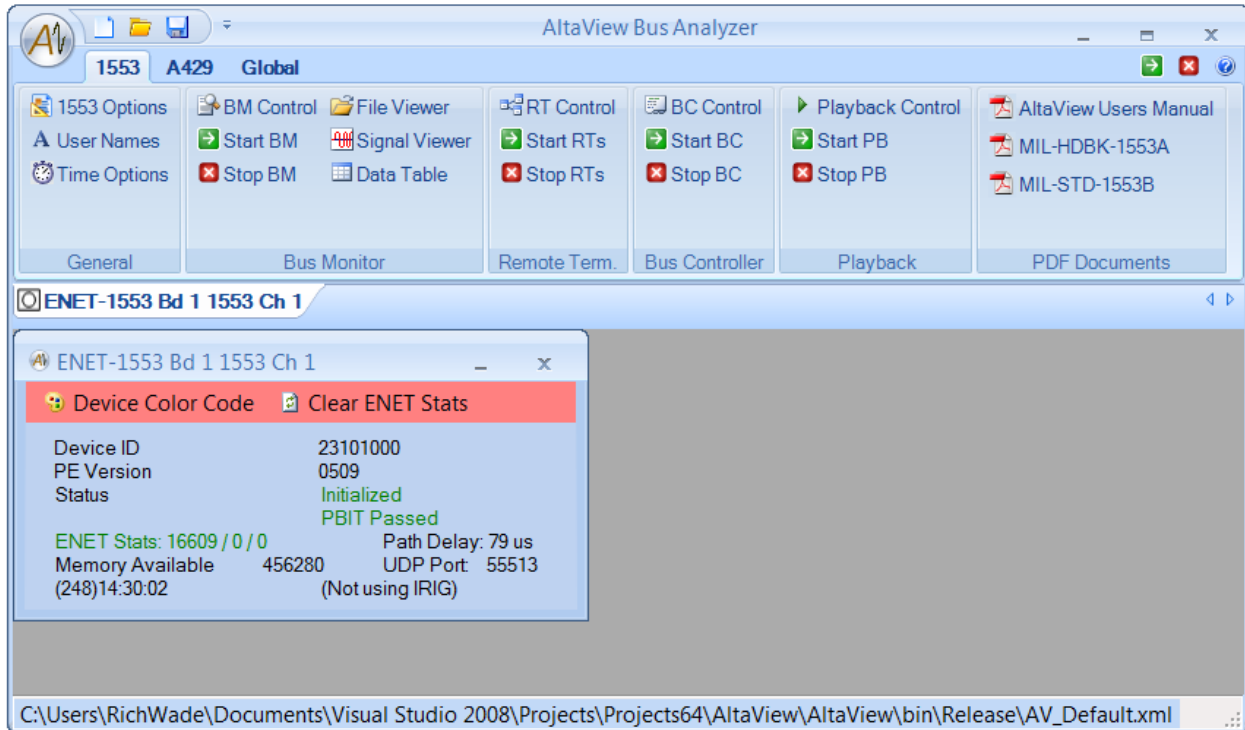
Click on the combo-box for “Board Type” – this gives you a list of all supported Alta Products. Select the appropriate product (ENET-1553, ENET2-1553, ENET-A429, etc.). In this example we are using the ENET-1553.



You should now see the IP addresses in the “Network Options” box. The ENET device should show the factory default IP address of 192.168.0.128. The system should show our static IP address of 192.168.0.1 – if you do not see this you may have multiple network adapters. In this case select the

down-arrow in the combo box to see the available adapter IP addresses – select the correct adapter (should be 192.168.0.1 for this example). **Click OK.**

This will put you back at the AltaView main form and the software will attempt to communicate with the ENET device to open a connection. If this is successful you should see something like this:



If "Status" shows "Initialized" and "PBIT Passed" in green then you are successfully communicating with the ENET device! You can now use the AltaView tools to send or receive messages, labels, etc.

Please refer to the **AltaView Software Users Manual** for more information on the AltaView software. Please refer to the **Hardware Manual** for your specific ENET device for more information on the hardware, connectors, etc.

Note that you can change the IP address of the ENET device if this is necessary. This is discussed in the AltaView manual (under Global Tools – ENET Tools – ENET Config). Remember that the PC and the ENET device must be on the same subnet in order to communicate with each other.

If you need assistance or have questions please contact Alta at:

E-mail: alta.support@altadt.com

Phone: 1-888-429-1553 ext 2